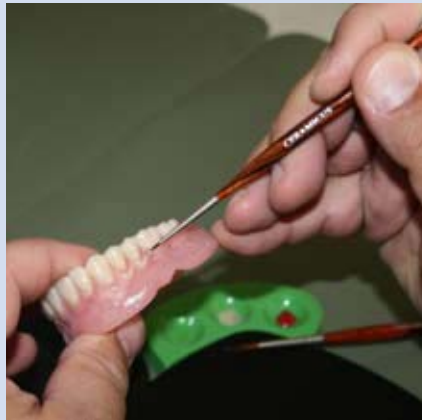




JIM COLLIS

Tools don't make the laboratory technician, but they certainly can enhance both the quality of the work product and the efficiency with which the laboratory operates. That's why I choose a wide variety of Renfert products for my own laboratory. For excellence in de-



The small Ceramicus brush is for intricate work. Placing small amount of composite or porcelain accurately is what this brush is used for.

sign, quality in product craftsmanship, and tremendous durability, Renfert products are top of the line!

In my 30+ years as a dental lab owner and technician, I have purchased my fair share of tools and equipment from a number of manufacturers. Each item purchased for the lab was supposed to make my life easier, enhance case esthetics, keep the lab cleaner, or save time so that I could get out of the lab on time. Often the products did not



The angled chisel for collar carving. This instrument is perfect for creating the sulcus around the necks of the teeth.

live up to expectations or they simply did not survive the grueling demands of day-to-day lab use.

*Most of my hand tools used for waxing, carving, and composite build-ups bear the Renfert name. All of the waxing tools have hexagonal shaped handles for accurate, comfortable grip. They are all very lightweight and have various tips designed for carving, cutting, or shaping wax. Renfert's electronic waxing unit, the **Waxlectric**, has a superior design to other brands I have previously used. The unit has two separate heat controls, one for each spatula. I like my bulk wax spoon for be fairly hot.*



My smaller wax spoon is set to warm, and I use this tip for finesse festooning. Many different tips are offered for both denture fabrication and for crown and bridge waxing.

*My Renfert brand **Waxprofi** has the largest reservoir that I have ever seen along with a tapered steel rim around the edge so dripping wax ends up back in the reservoir and not on the desk. The unit also has a very accurate heat control. It holds my base plate wax for bulk application before festooning.*

Jim Collis

381 York Rd.
Suite 12
Elmhurst, IL 60126

Phone Number 630 279-0555

E-Mail cpl1956@sbcglobal.net

This a partial list of the shows I will be speaking at in 2009

- 1/09 Prairieland in Iowa
- 2/09 LMT Lab Day Chicago
- 3/09 MDLA
- 4/09 LMT East
- 5/09 LMT West
- 8/09 Fun N Sun

I also use Renfert's **Vario E** wax unit. The Vario E has three separately controlled heat wells with tapered rims. I keep hard setup wax in the first well, a softer wax in the second well, and



The festooning carver is used to create the natural looking tissue contours. The discoid is the correct diameter to create lifelike root structures.



The big spoon at work. This large spoon tip is for bulk placement of waxes. I keep this spatula rather hot to flow large volumes of wax over the buccal portion of the wax try-in in prep for final festooning and carving

sticky wax in the third well. Each compartment can be set at the ideal temperature.

At my grinding bench, I have a **Renfert suction unit**. It is strong enough to handle heavy acrylic, stone, and metal grindings safely and efficiently. The machine is extremely easy to use and is connected to my lathes and trimmers to turn on when I start grinding and shut off when I am finished.

At my lab, I offer naturalized denture bases to my clients utilizing composite stains and pastes. The **Artmix** is a must when working with composites. The black palette is to store and mix paste composites. The green rubber dish attachment is for gel or liquid composites. The Artmix has a black cover to place on top or both working areas to

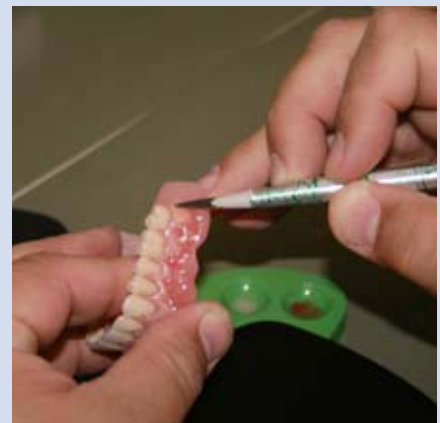


protect the materials from light when not in use. The black palate is a snap to clean, just wipe off the paste. To clean the rubber cups just light cure the material in place and simply pop it out. I think Renfert also makes the best tools for placement of composite in the industry. The wide array of tips makes it a snap to place composite pastes where you need them accurately.

The tips are flexible yet extremely durable. For the placement of composite gels or liquid, the **Ceramicus** brushes from Renfert win the award! These beautiful wood handled handmade brushes have a very unique feature. The bristles are synthetic and hydrophilic. Once the brush is wet, it stays wet for a long time. Rewetting between brush strokes or retrieving more composite is unnecessary. The wet tip allows the gel or liquid composite to flow off of the brush tip for accurate placement. Cleaning these brushes is easy. Just run them under cold water and shake.

Once the denture is waxed, processed, and naturalized, it must be polished. Renfert does not fall short in this area either. The **buff wheels** and **polishing wheels** hold Renfert's high shine agent deeply so that there is no need to keep reapplying. The high shine material is just fantastic! Only a light touch is all that is needed to achieve a brilliant high luster shine on the denture base that will repel stains and plaque.

Renfert products make life around Collis Prosthodontic Laboratory a lot easier. Take my advice; reinvent your laboratory with Renfert.



Durable flexible placement tools that last. These tips help place composite paste where it belongs. Tough enough to place material but flexible enough to smooth it. I use these tools to build additional root structure.

JIM COLLIS



The larger Ceramicus brushes are for larger applications. I use this brush for wiping wider areas of the denture base with darker composite stains to highlight the blanched or lighter stain pigments of the denture base below the necks of the teeth.



The composite team. All the tools you need to perfect your composite work.



The ultimate waxing trio. Renfert's Waxprofi, the Vario E and the electronic waxing unit, the Waxlectric are essential for consistent temperature control of your waxing tips and most of all your waxes. Burnt wax loses its handling properties and becomes dirty which causes poor esthetics.



Ceramicus
Art.-No. 1716-xxxx



Waxlectric II
Art.-No. 2157-x000



Vario E
Art.-No. 1452-x000



Waxprofi
Art.-No. 1440-x000